



AUTOMATIC BAND DOUGH ROUNDER

OPERATION'S MANUAL



The total or partial reproduction of this manual
is prohibited by any means, whether printed or electronic;
without the prior, express and written authorization of the author.

AUTOMATIC BAND DOUGH ROUNDER

OPERATION'S MANUAL

INDEX

GENERAL SAFETY INSTRUCTIONS 4
CAUTION 5
ELECTRICAL INSTALLATION..... 6
COMPONENTS..... 7
OPERATING INSTRUCTIONS..... 8
BAND CHANGE..... 10
CLEANING AND MAINTENANCE 16

GENERAL SAFETY INSTRUCTIONS

WARNING: To reduce the risk of injury, read all instructions properly.

Failure to follow the instructions listed below can cause electric shock, fire, serious injuries, mutilation and/or damage to the equipment.

A. SAFETY IN THE WORK AREA.

- * Keep the work area clean and lit. Crowded or dark areas lead to accidents.
- * Keep children, customers, and non-company personnel away from the electrical and mechanical operation area of the equipment.
- * It is recommended to have a minimum space of one meter or three feet around the machine for safety measure and to optimize work.
- * Do not operate the equipment without first checking all electrical connections.

B. ELECTRICAL SAFETY.

- * Machinery connections must be adapted to the power outlets.
- * Do not use adapters for the switches: since you run the risk of receiving an electric shock.
- * Do not expose the switches and/or electrical connections to rain or humidity. If water enters these elements, there is a risk that they will break down or suffer an electric shock.
- * Use cable in a single piece, if there are joints in the connections these can produce a short circuit.
- * Do not expose cables or electrical connections to heat, oil, sharp edges, or moving parts, as damaged cables can cause electric shock or short circuit.

C. PERSONAL SAFETY.

- * Do not operate the equipment if you are tired, under the influence of alcohol or drugs.
- * Wear appropriate clothing, do not wear loose clothing, or necklaces, earrings, watches, if you have long hair wear a tie to keep it up.
- * Do not climb on the structure of the machine for any reason, falls or injuries may occur.
- * Avoid using headphones, cell phones or any other equipment that works as a distraction to the operator.
- * Make correct use of personal protective equipment if any maintenance is to be carried out on the machine.
- * If any change is made to the model or component of the equipment, be it electrical or mechanical related, it must be de-energized and stop the machine completely to avoid accidents.
- * Keep limbs away from all moving parts.

CAUTION

The following symbols indicate the safety measures that must be taken before and after starting up the equipment.



ELECTRICAL RISK In which you can suffer electric shocks, if you do not comply with the electrical safety provisions.



GEAR RISK Keep your hands away from the chains and gears of the machine.

ELECTRICAL INSTALLATION

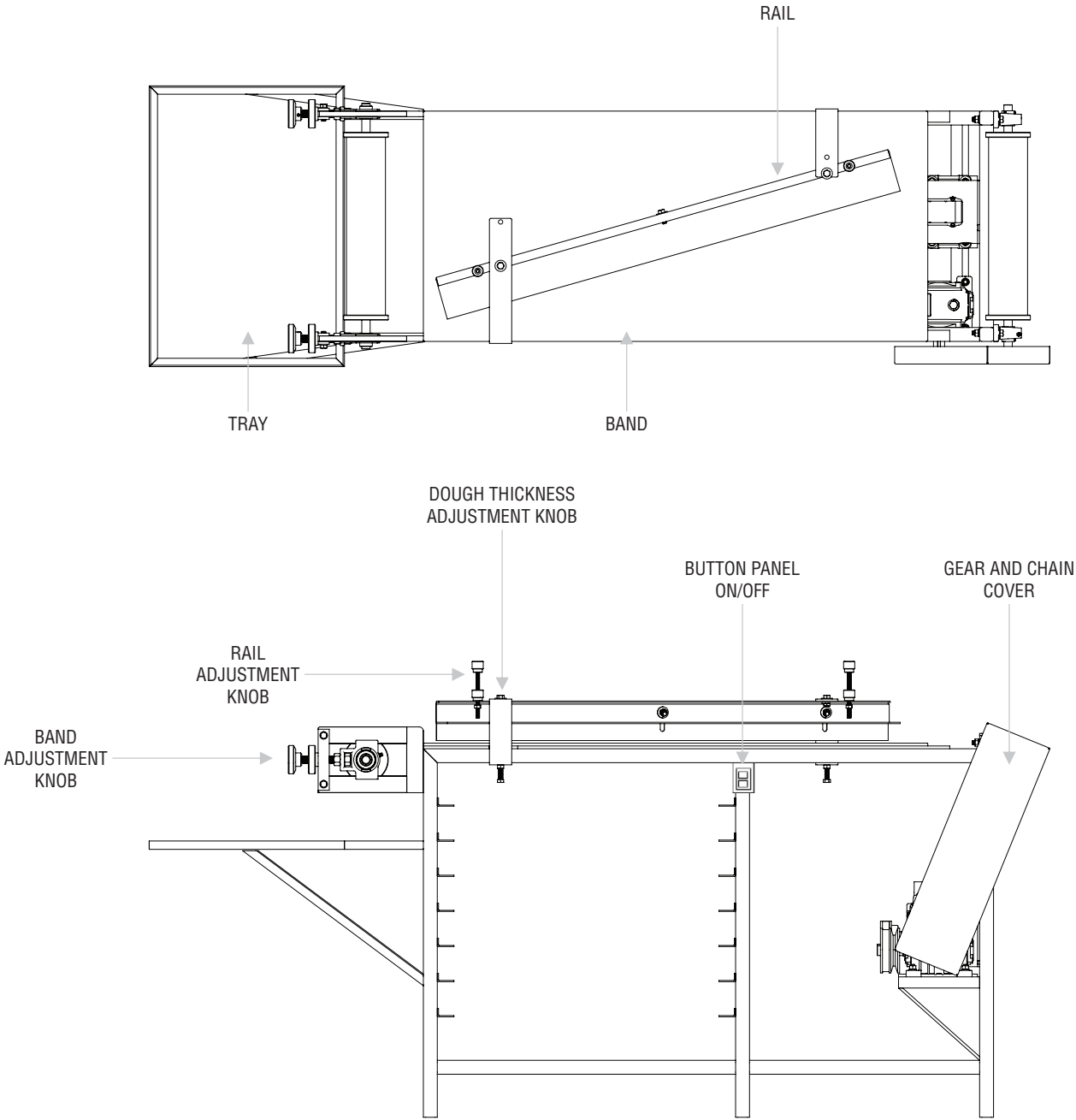
Verify that the electrical connection is 110v. Inspect that there are no short circuits, no loose or bare wires. Ensure that all cables are isolated and without contact, check contactors and switches in good condition. It is recommended to use a 12 gauge cable for the installation.

| ELECTRICAL INSTALLATION | |
|-------------------------|---------------------------------|
| A | 110v electrical installation |
| B | 12 gauge cable (conduit cable). |



AUTOMATIC BAND DOUGH ROUNDER

COMPONENTS



AUTOMATIC BAND DOUGH ROUNDER

OPERATION'S MANUAL

OPERATING INSTRUCTIONS



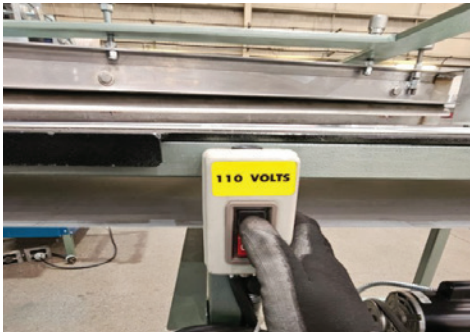
1

Connect the dough rounder to an electrical outlet



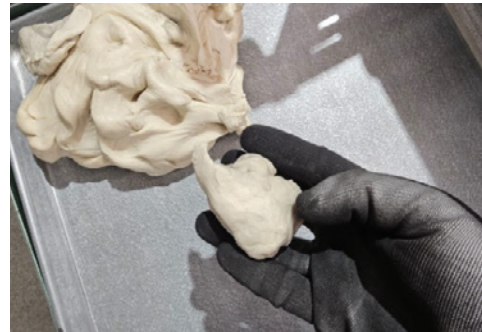
2

Prepare wheat flour



3

Press the On button on the control panel.



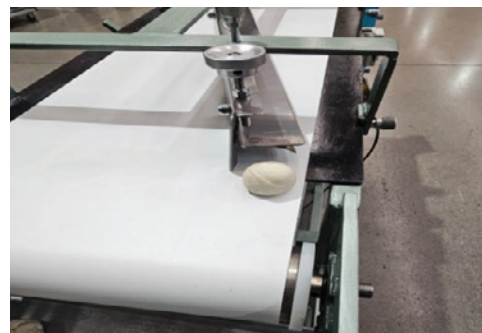
4

Take the wheat flour dough



5

Place dough on the band.

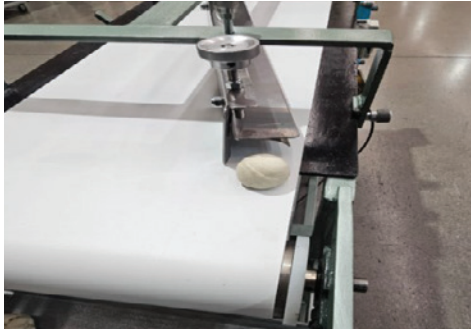


6

Check shape and roundness at the rail outlet.

AUTOMATIC BAND DOUGH ROUNDER

OPERATION'S MANUAL



7

Take the dough



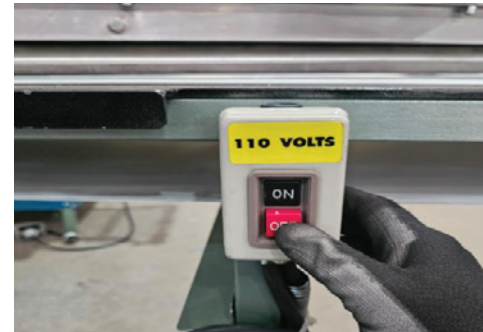
8

Start with production



9

Place the dough in the tray.



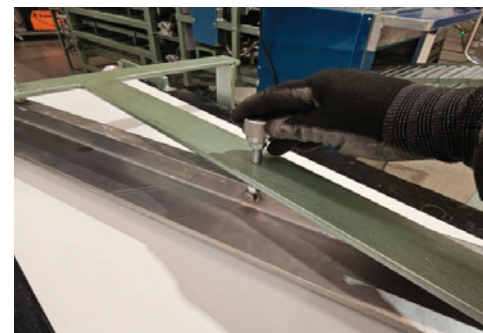
10

Press the OFF button on the control panel when production ends



11

Turn knobs to adjust the thickness of the dough ball.



12

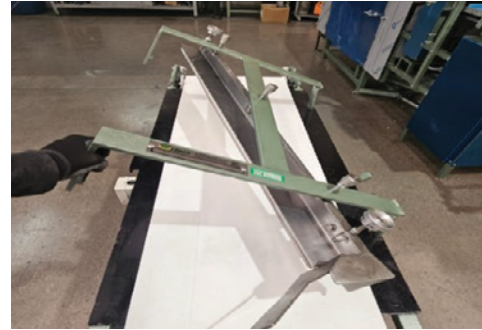
Turn knobs to adjust rail height

BAND CHANGE



A

Remove the 2 retaining knobs
from the base of the rail



B

Raise the base



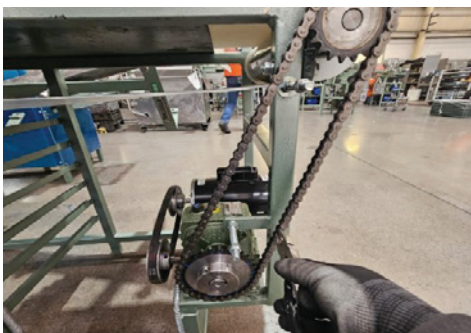
C

Remove chain cover knobs



D

Remove the chain cover



E

Remove the chain lock



F

Remove the chain



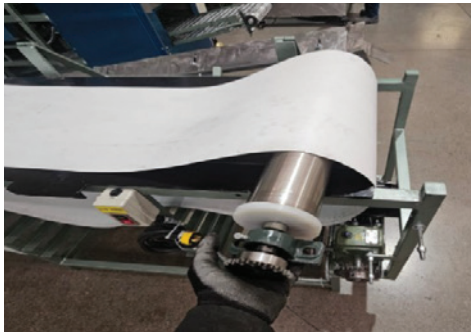
G

Loosen the screws of the 2 wall bearings with a 9/16" wrench.



H

Remove the screws



I

With your hand, take the roller and remove it without damaging the belt.



J

Remove the screws from the aluminum profiles with a 9/16" wrench.



K

Pull the aluminum knobs by hand.



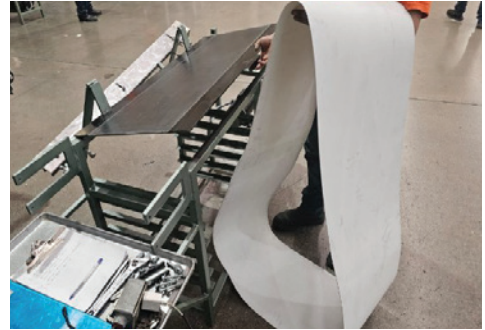
L

Take roller and remove it without damaging the belt



M

Lift the metal plate



N

Take the band with your hand
and remove it from the rounder



Ñ

Lift the metal plate



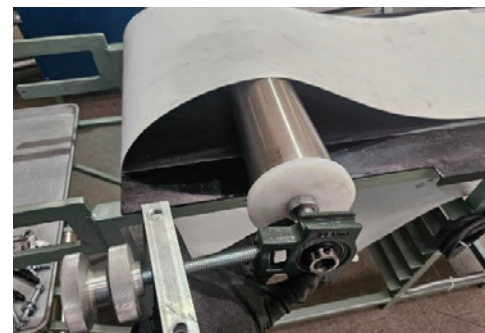
O

Place the band on the rounder plate



P

Verify that the band is
in good state



Q

Take a roller with your hand
and place it on the base of the rounder.

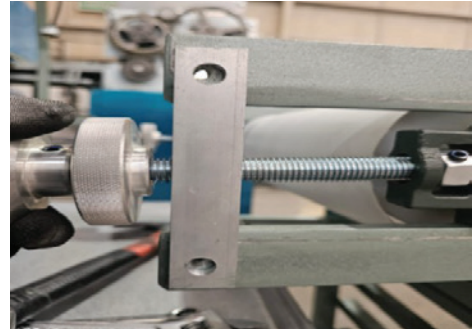
AUTOMATIC BAND DOUGH ROUNDER

OPERATION'S MANUAL



R

Place bearing in slab



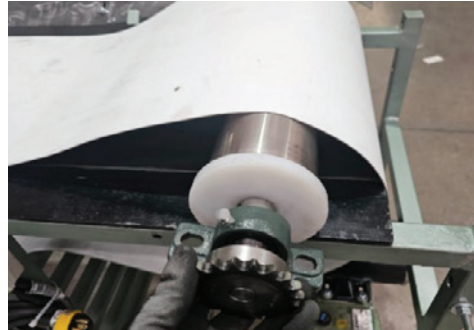
S

Place aluminum profile in the grooves of the slab



T

Install the screws and tighten with a 9/16" wrench.



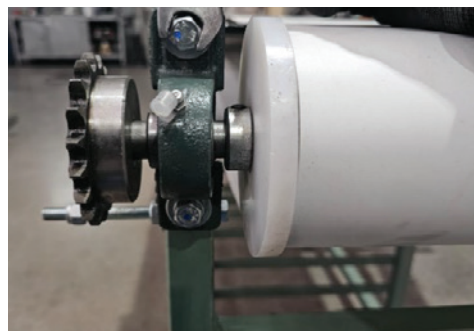
U

Place roller on base of the rounder



V

Place the screws in the 2 bearings



W

Tighten the screws with a 9/16" wrench.

AUTOMATIC BAND DOUGH ROUNDER

OPERATION'S MANUAL



X

Turn aluminum knobs and tension the band.



Y

Place chain on the sprockets.



Z

Assemble the chain



A1

Activate the band rounder



B1

Functional inspection
of the rounder



C1

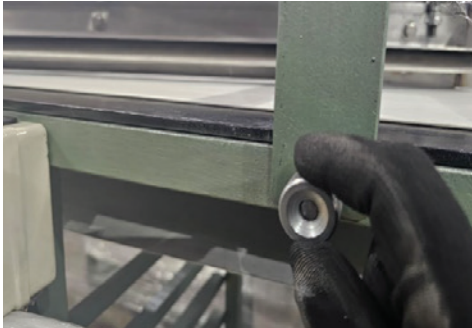
Turn off the band rounder

AUTOMATIC BAND DOUGH ROUNDER



D1

Mount the base on the plate



E1

Place the knob on the base



F1

Install the chain cover



G1

Install the knobs to hold the chain cover

CLEANING PROCEDURE

WARNING: The cleaning of the dough rounder must be carried out with the machine completely stopped to avoid accidents such as crushing or mutilations.

DOUGH ROUNDER CLEANING

Remove any dough residue on the band with a cloth.
Spread some water on the conveyor belt..

MAINTENANCE

Clean the machine before and after using it.

The duration of the spare parts will depend on the preventive maintenance and care taken to the machine.
The more frequently this maintenance is done, the parts will have a longer life.

LUBRICATION

The following table shows the parts, the type of lubricant, and the frequency with which the machines and their parts must be lubricated.

| PART | LUBRICANT | PERIOD |
|--------------------|-------------|------------------|
| Chain and sprocket | SAE 40 oil | 2 times per week |
| Bearings | BAT3 Grease | Every 3 days |
| Gear Reducer | SAE 80/90 | Every 3 months |



HEADQUARTERS

AV. INDUSTRIAS #3665, ZONA INDUSTRIAL
CP 78395 SAN LUIS POTOSÍ, SLP. MÉXICO



444 127 11 80



444 129 29 79

info@manufacturaslenin.mx

MEXICANTORTILLAMACHINE.COM