



COOLING CONVEYOR

OPERATION'S MANUAL



The total or partial reproduction of this manual
is prohibited by any means, whether printed or electronic;
without the prior, express and written authorization of the author.

COOLING CONVEYOR

OPERATION'S MANUAL

3 & 5 STEPS MODELS

INDEX

GENERAL SAFETY INSTRUCTIONS	4
CAUTION	5
ELECTRICAL INSTALLATION	6
MODEL NUMBER	7
COMPONENTS	8
OPERATING INSTRUCTIONS	9
CLEANING AND MAINTENANCE	10

GENERAL SAFETY INSTRUCTIONS

WARNING: To reduce the risk of injury, read all instructions properly. Failure to follow the instructions listed below can cause electric shock, fire, serious injuries, mutilation, and/or damage to the equipment.

A. SAFETY IN THE WORK AREA.

- * Keep the work area clean and lit. Crowded or dark areas lead to accidents.
- * Keep children, customers, and non-company personnel away from the electrical or mechanical operation of the equipment.
- * It is recommended to have a minimum space of one meter or three feet around the machine for safety measures and to optimize work.

B. ELECTRICAL SAFETY.

- * The connections of the machinery must be adapted to the power outlets.
- * Do not use adapters for the switches: since you run the risk of receiving an electric shock.
- * Do not expose the switches and/or electrical connections to rain or humidity. If water enters these elements, there is a risk that they will break down or suffer an electric shock.
- * Use cable in a single piece, if there are joints in the connections these can produce a short circuit.
- * Do not expose cables or electrical connections to heat, oil, sharp edges, or moving parts, as damaged cables can cause electric shock or short circuits.

C. PERSONAL SAFETY.

- * Do not operate the equipment if you are tired, or under the influence of alcohol or drugs.
- * Wear appropriate clothing, do not wear loose clothing, necklaces, earrings, or watches, if you have long hair wear a tie to keep it up.
- * Do not climb on the structure of the machine for any reason, falls or injuries may occur.
- * Avoid using headphones, cell phones, or any other equipment that works as a distraction to the operator.
- * Make correct use of personal protective equipment if any maintenance is to be carried out on the machine.
- * If any change is made to the model or component of the equipment, be it electrical or mechanical related, it must be de-energized and stop the machine completely to avoid accidents.
- * Keep limbs away from all moving parts.

CAUTION

The following symbols indicate the safety measures that must be taken before and after starting up the equipment.



ELECTRICAL RISK In which you can suffer electric shocks if you do not comply with the electrical safety provisions.



GEAR RISK Keep your hands away from the chains and gears of the machine.

ELECTRICAL INSTALLATION

It is recommended to use 12 gauge cable for the installation of the cooler. No short circuits, loose wires, or blown fuses. Ensure that all cables are insulated and without contact, check contactors and switches in good condition.

If the power supply is triphasic, the switch must be 3x30 A.

If the power supply is single-phase, the switch must be 2x30 A.

The wiring must be in one piece.

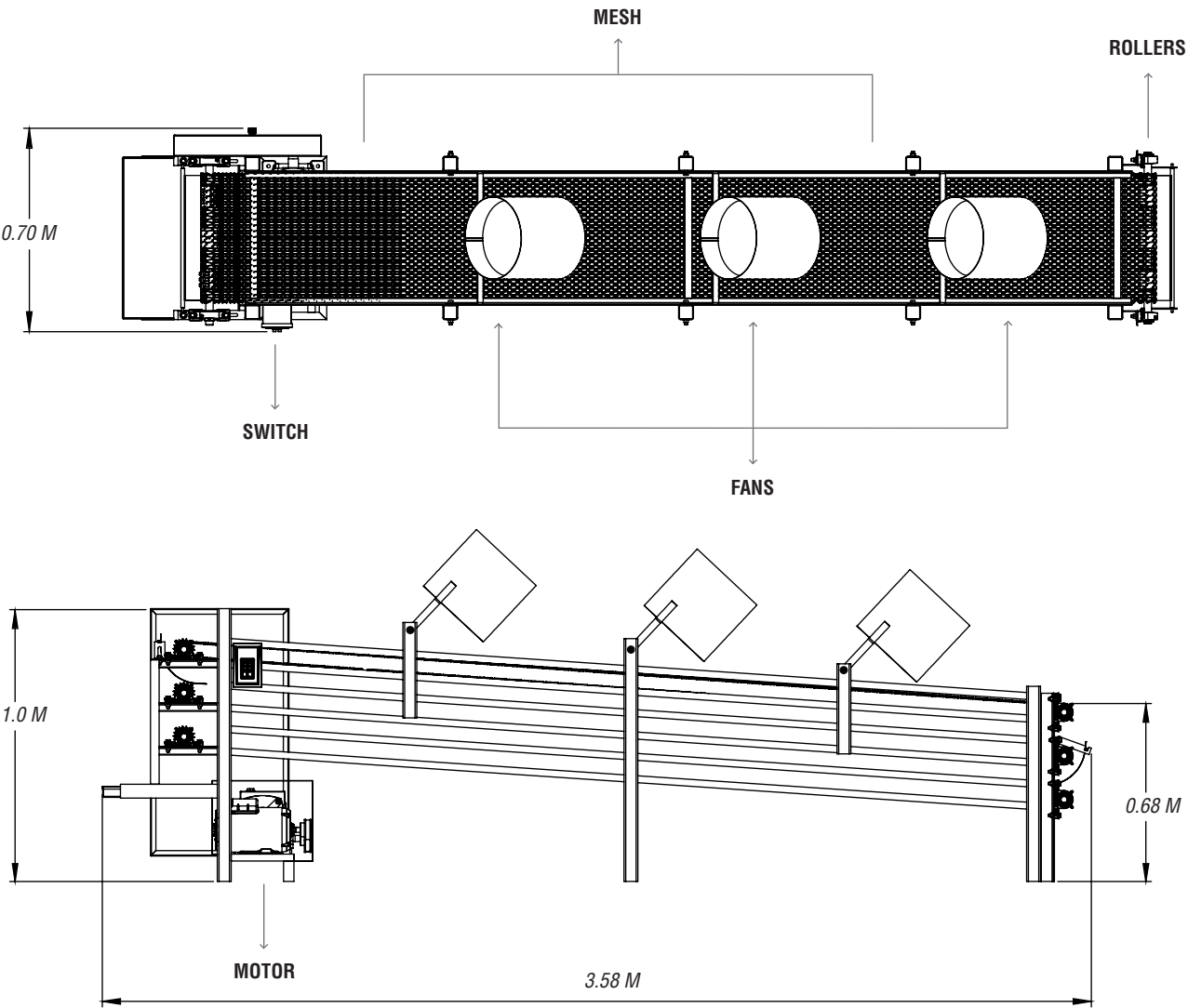
ELECTRICAL INSTALLATION	
A	220V electrical installation
B	12 gauge cable (conduit cable).



MODEL NUMBER:

- 10" 3 - Tier Cooling Conveyor
- 15" 3 - Tier Cooling Conveyor
- 18" 3 - Tier Cooling Conveyor
- 27" 3 - Tier Cooling Conveyor
- 10" 5 - Tier Cooling Conveyor
- 15" 5 - Tier Cooling Conveyor
- 18" 5 - Tier Cooling Conveyor
- 27" 5 - Tier Cooling Conveyor
- 32" 5 - Tier Cooling Conveyor

COMPONENTS



COOLING CONVEYOR

OPERATION'S MANUAL

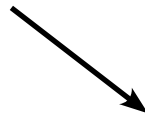
OPERATING INSTRUCTIONS:



- 1 | Connect equipment to a 110 volt outlet.



- 2 | Turn on mesh traction and fans.



CLEANING PROCEDURE

WARNING: The cooler must be cleaned with the machine in total stop and de-energized to avoid accidents such as crushing or electric shock.

MAINTENANCE

Clean the machine before and after using it.

The duration of the spare parts will depend on the preventive maintenance and care given to the machine. The more frequent maintenance is done, the longer the parts will last.

COOLER CLEANING

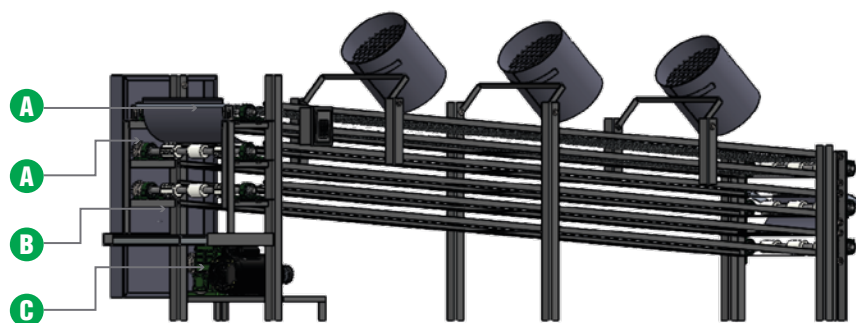
- 1) Turn off the equipment, unplug it, and remove any visible debris; disassemble removable parts.
- 2) Remove dry flour and grease residues using a brush or compressed air.
- 3) Wash the parts with an approved detergent and rinse with potable water.
- 4) Apply NSF-certified sanitizer, let air dry or dry with a clean towel, and reassemble.

LUBRICATION

The following table shows the parts, the type of lubricant, and the frequency with which the machines and their parts must be lubricated.

PART	LUBRICANT	PERIOD
Bearings	BAT 3 Grease	Every 3 days
Chains	SAE 40 Oil	Every 3 days
Reducer	SAE 250 Oil	Every 3 days
Gears	BAT 3 Grease	Every 3 days

The following figures show the schematic location of the parts that require lubrication.



LUBRICANT
(A) BAT3 Grease
(B) SAE 40 Oil
(C) SAE 80W-90 mineral





HEADQUARTERS

AV. INDUSTRIAS #3665, ZONA INDUSTRIAL
CP 78395 SAN LUIS POTOSÍ, SLP. MÉXICO



444 127 11 80



444 129 29 79

info@manufacturaslenin.mx

MEXICANTORTILLAMACHINE.COM