



CERTIFIED MLPH BURRITO PRESS MACHINE

OPERATION'S MANUAL



The total or partial reproduction of this manual
is prohibited by any means, whether printed or electronic;
without the prior, express and written authorization of the author.



MLPH BURRITO PRESS MACHINE

OPERATION'S MANUAL

Equipos e Insumos para la Industria Alimenticia S.A. de C.V. DBA Equipos Lenin

INDEX

GENERAL SAFETY INSTRUCTIONS.....	4
CAUTION	5
GAS AND ELECTRICAL INSTALLATION.....	6
COMPONENTS.....	7
OPERATING INSTRUCTIONS	8
CLEANING AND MAINTENANCE	12
LUBRICATION.....	14

GENERAL SAFETY INSTRUCTIONS

WARNING: To reduce the risk of injury, read all instructions properly. Failure to follow the instructions listed below can cause electric shock, fire, serious injuries, mutilation and/or damage to the equipment.

A. SAFETY IN THE WORK AREA.

- * Keep the work area clean and lit. Crowded or dark areas lead to accidents.
- * Do not operate the equipment without first checking all gas connections with soapy water, to ensure that there are no leaks that could cause an explosion.
- * Keep children, customers and non-company personnel away from the electrical and mechanical operation area of the equipment.
- * It is recommended to have a minimum space of one meter or three feet around the machine for safety measure and to optimize work.

B. ELECTRICAL SAFETY.

- * Machinery connections must be adapted to the power outlets.
- * Do not use adapters for the switches: since you run the risk of receiving an electric shock.
- * Do not expose the switches and / or electrical connections to rain or humidity. If water enters these elements, there is a risk that they will break down or suffer an electric shock.
- * Use cable in a single piece, if there are joints in the connections these can produce a short circuit.
- * Do not expose cables or electrical connections to heat, oil, sharp edges, or moving parts, as damaged cables can cause electric shock or short circuit.

C. PERSONAL SAFETY

- * Do not operate the equipment if you are tired, under the influence of alcohol or drugs.
- * Wear appropriate clothing, do not wear loose clothing, or necklaces, earrings, watches, if you have long hair wear a tie to keep it up.
- * Do not climb on the structure of the machine for any reason, falls or injuries may occur.
- * Avoid using headphones, cell phones or any other equipment that works as a distraction to the operator.
- * Make correct use of personal protective equipment if any maintenance is to be carried out on the machine.
- * If any change is made to the model or component of the equipment, be it electrical, mechanical or gas related, it must be de-energized, cut off the gas supply and stop the machine completely to avoid accidents.
- * Keep limbs away from all moving parts.

CAUTION

The following symbols indicate the safety measures that must be taken before and after starting up the equipment.



HOT HAZARD Some parts of the machine are hot while in operation.



CRUSHING HAZARD Keep hands away from the cam press when be in operation.



ELECTRICAL RISK In which you can suffer electric shocks, if you do not comply with the electrical safety provisions.



GEAR RISK Keep your hands away from the chains and gears of the machine.



DO NOT COVER THE BARREL'S AIR INTAKE. Keep your hands away from the air inlet of the barrel.

GAS AND ELECTRICAL INSTALLATION

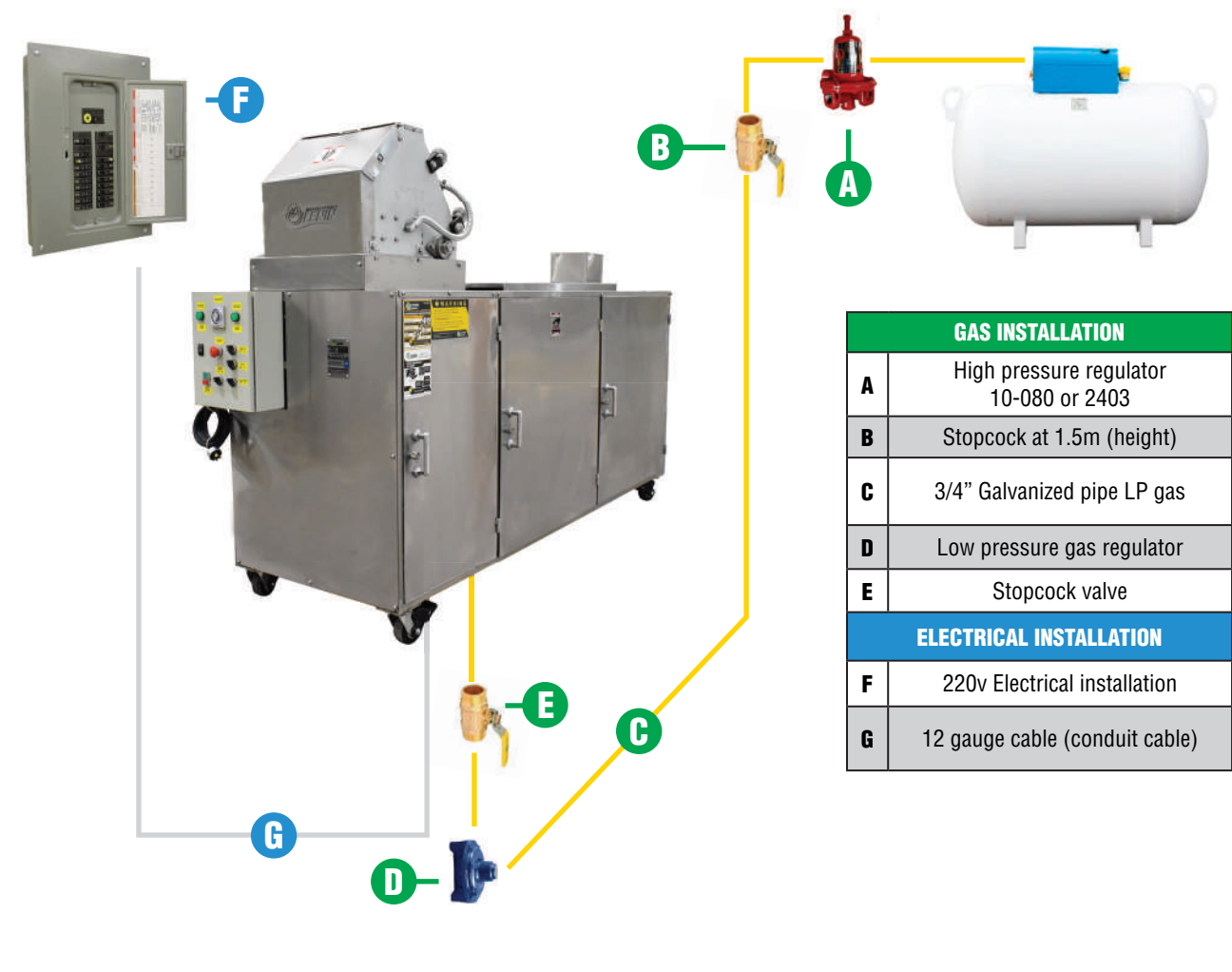
At the outlet of the gas tank, a model 10-080 high pressure regulator must be installed, with a pressure gauge (0-7 Kg.), In order to verify the correct supply pressure. The pipe used for the connection is 3/4"of diameter, either L-type copper or 40-gauge black tubing.

The length of the pipe should not exceed 10 meters, from the outlet of the gas tank.

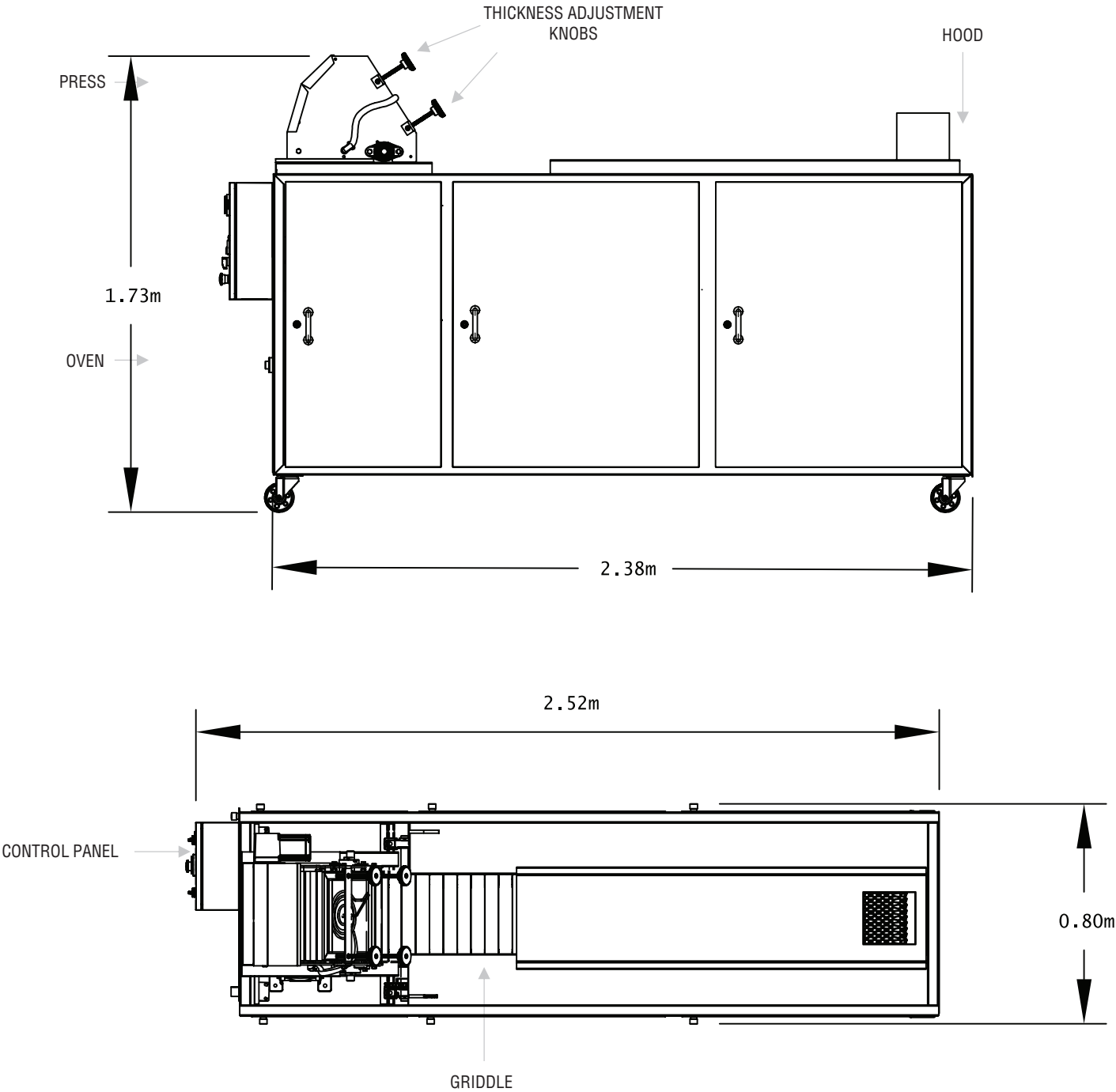
A union nut must be installed between the stopcock and the low-pressure regulator.

Before the machine's gas input, a low pressure regulator must be installed.

Verify that the electrical connection is 220v. No short circuits, no loose or bare wires.



COMPONENTS



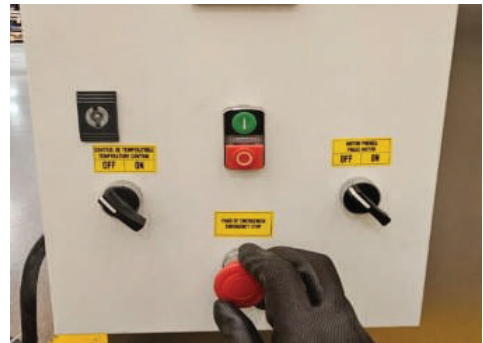
MLPH BURRITO PRESS MACHINE

OPERATION'S MANUAL



1

Plug the machine to an electrical outlet



2

Energize emergency stop



3

Activate temperature control switch OFF/ON.
OFF indicator will turn on (red light)



4

Turn pyrometer to 100°C.
“Equipment in operation” indicators will light.



5

Connect to gas outlet with high pressure
regulator.



6

Connect gas outlet to inlet
of the carburetor valve.

MLPH BURRITO PRESS MACHINE

OPERATION'S MANUAL



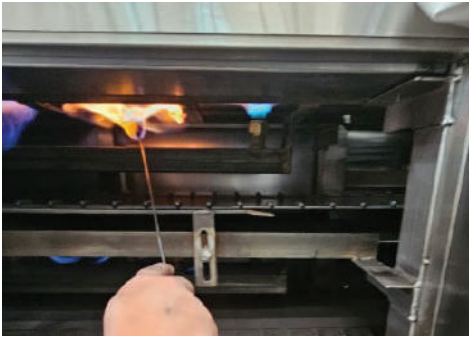
7

Activate oven motor button.



8

Open the stopcock of the gas intake and the inlet of the carburettor valve.



9

With torch light the two levels of nozzles of the machine.



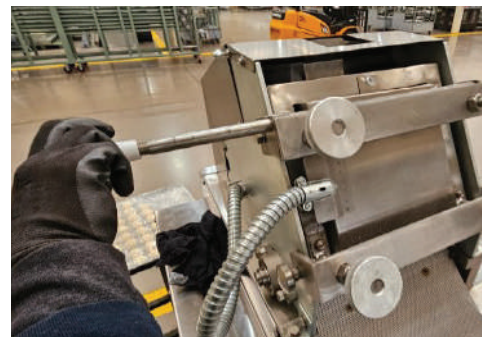
10

Regulate the carburation of the oven:
Bottom knob, regulates gas
Upper knob, regulates the air



11

Check flame intensity in nozzles,
wait 3 minutes for the griddle to heat up.



12

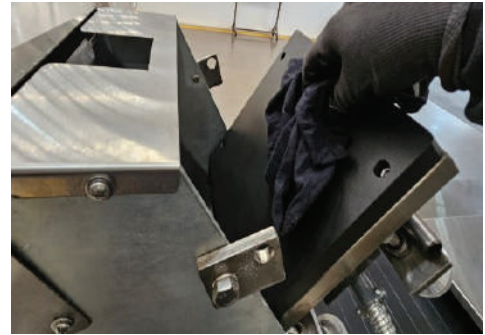
Extract rod to release plate

MLPH BURRITO PRESS MACHINE

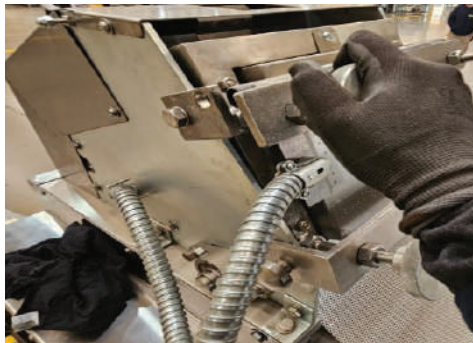
OPERATION'S MANUAL



13 | Open upper press plate



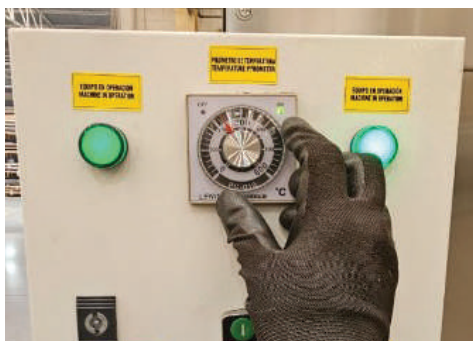
14 | Clean aluminum plate with non-stick and cotton cloth.



15 | Close upper plate of the press.



16 | Insert rod to secure plate.



17 | Turn pyrometer to 140-160°C.
“Equipment in operation” indicators will light.



18 | Activate the motor-press switch OFF/ON



MLPH BURRITO PRESS MACHINE

OPERATION'S MANUAL



19

Take dough ball



20

Place dough ball in the groove of the upper sheet of the press.



21

Check the shape and thickness of the tortilla after the dough ball is pressed.



22

Verify tortilla heating in comales.



23

Upon obtaining desired cooking, begin production.



24

To adjust the thickness of the tortilla:
Turn knobs counterclockwise for thinner tortillas.
Turn knobs clockwise for thicker tortillas.



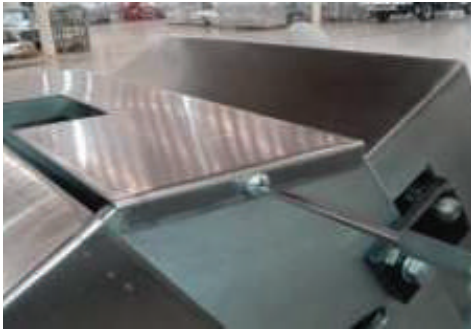
**AVOID OPERATING THE PLATES WITHOUT PRODUCT FOR EXTENDED PERIODS.
OVERHEATING MAY CAUSE DETERIORATION OF THE TEFLON COATING.**

CLEANING AND MAINTENANCE PROCEDURE

Note: The cleaning procedure for the plates must be carried out as indicated in the manual, using potable water and a clean cloth, due to the Teflon coating.

For stainless steel parts, such as the slider, guards, and doors, a food-grade cleaner may be used.

1. Use warm water to remove visible dough residues. It is recommended to use a spray bottle and a clean cloth to facilitate removal.
2. Apply a food-grade disinfectant cleaner belonging to NSF category A1, following the manufacturer's instructions.
3. Rinse with potable or distilled water to remove any cleaner residues. Ensure that the rinsing time is sufficient to completely eliminate all residues.
4. Visually verify that the surface is clean and free of residues after rinsing.
5. Allow the surface to air dry or dry it with a clean, dry cloth.



A

Remove the cover screws.



B

Remove cover.



C

Extract rod to release plate.



D

Open top plate.

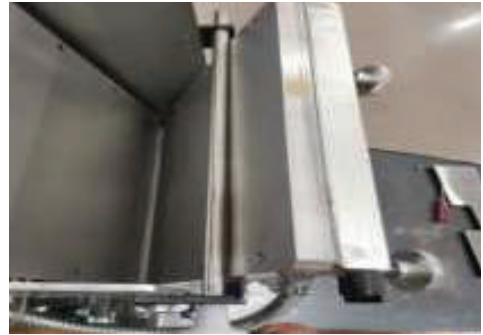
MLPH BURRITO PRESS MACHINE

OPERATION'S MANUAL



E

Insert rod into slots of the press



F

Secure rod in press slots to prevent crushing



G

Clean the aluminum plates with a cloth



H

Remove rod



I

Close top plate



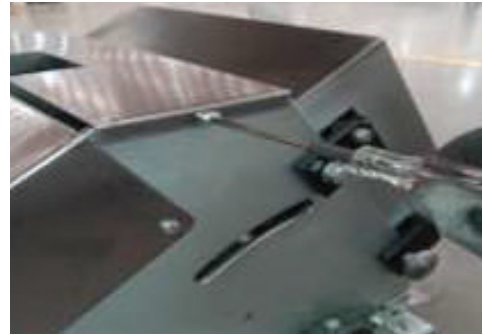
J

Place rod to secure plate



K

Place cover



L

Set undercut cover screws

MAINTENANCE

Clean the machine before and after using it.

The duration of the spare parts will depend on the preventive maintenance and care taken to the machine.

The more frequent this maintenance is done, the parts will have a longer life.

LUBRICATION

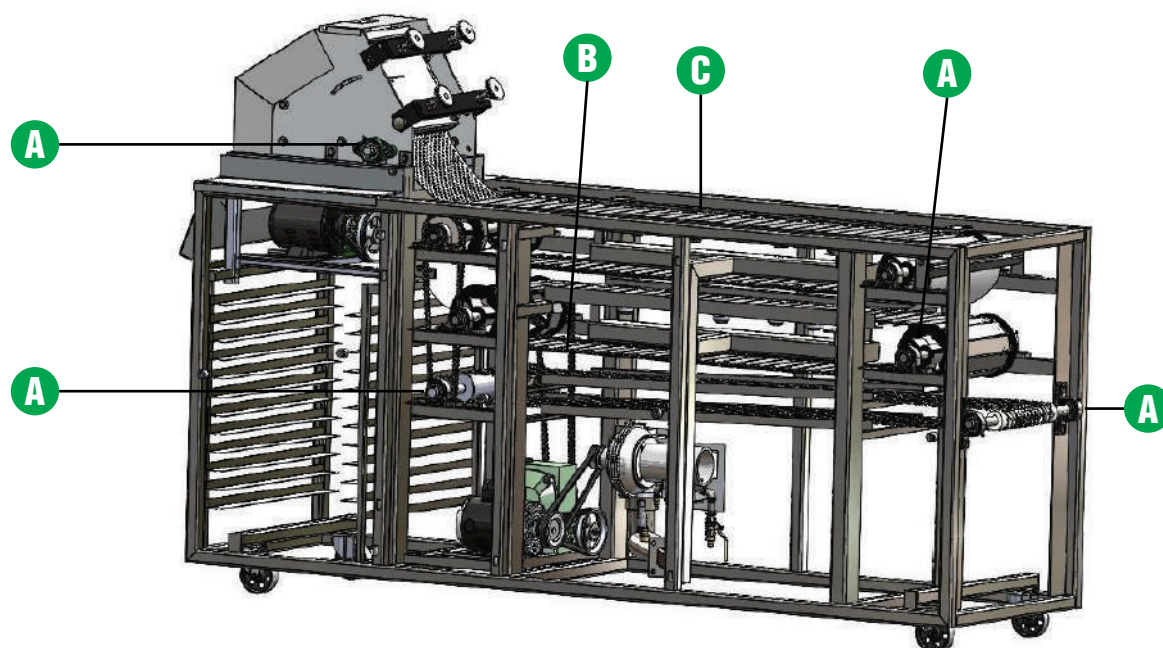
The following table shows the parts, the type of lubricant and the frequency with which the machines and their parts must be lubricated.

PART	LUBRICANT	PERIOD
Chains	SAE 40 Oil	3 times per week
Packed bearings	BAT 3 Grease	Every 3 days
Gears	SAE 40 Oil	Every week
Reducer	SAE 80/90 Mineral Oil	Every 3 months
Griddle hinges	Graphite	Every week

MLPH BURRITO PRESS MACHINE

OPERATION'S MANUAL

The following figures show the schematic location of the parts that require lubrication.



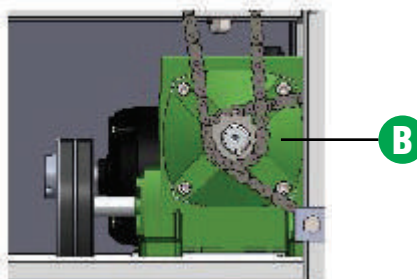
It is recommended to change oil according to its use:

0-4 hours daily - change every 3 months

4-8 hours daily - change every 2 months

The used oil must be drained and 400 ml of new SAE 80/90 mineral oil must be added.

LUBRICANT
A) BAT 3 Grease
B) 80/90 mineral oil
C) Graphite



A) Inject the lubricant into the bearing grease fitting.

B) Oil filling in Lenin reducer, sprockets and chains.

C) Graphite on the 2 levels of griddles.



HEADQUARTERS

AV. INDUSTRIAS #3655, ZONA INDUSTRIAL
CP 78395 SAN LUIS POTOSÍ, SLP. MÉXICO



444 127 11 80



444 129 29 79

info@manufacturaslenin.mx

MEXICANTORTILLAMACHINE.COM